



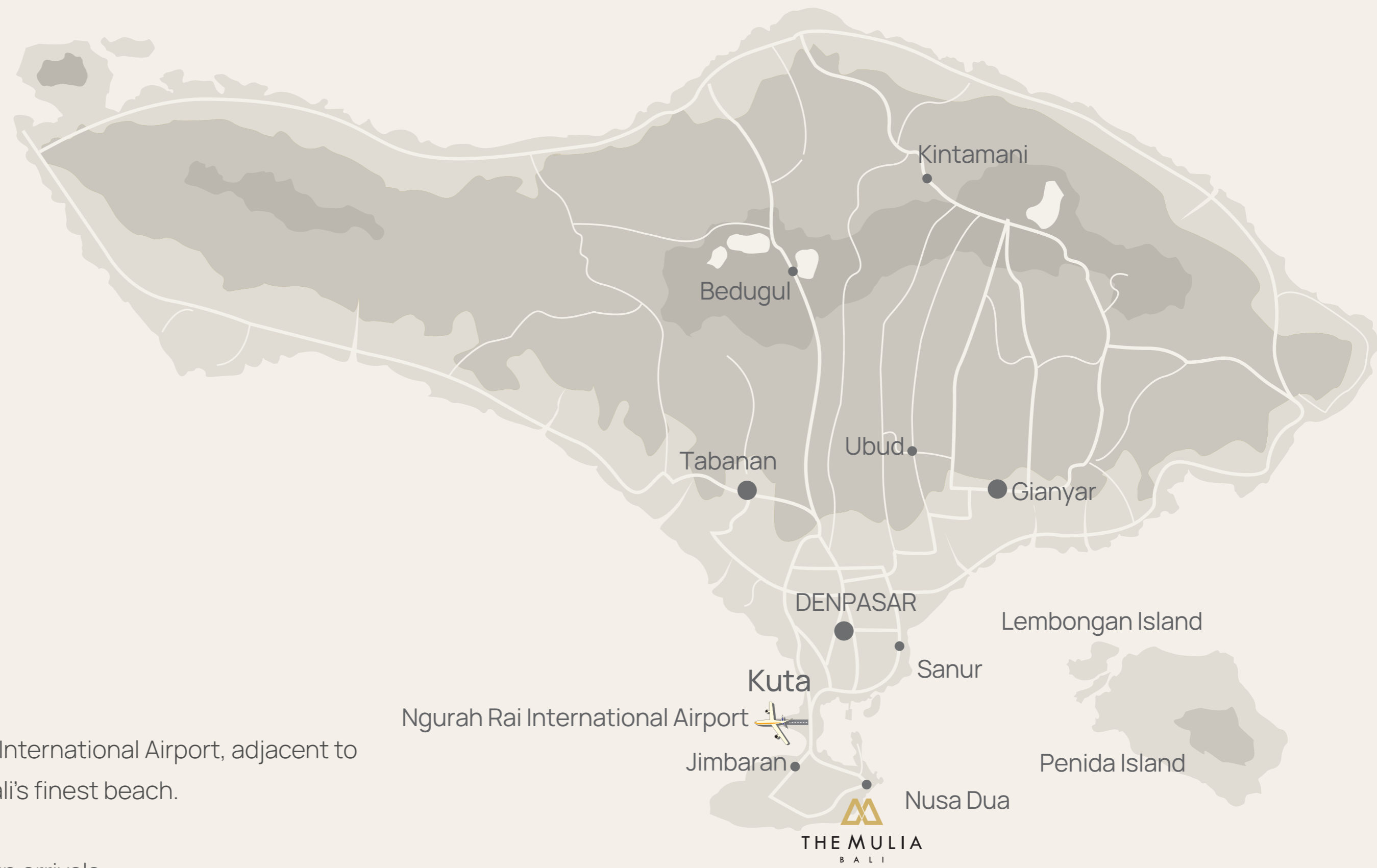
THE MULIA, MULIA RESORT & VILLAS
NUSA DUA - BALI



Welcome to Mulia Bali

An address where world-class meetings meet beachfront splendour.

Award-winning luxury in the heart of Bali, blending refined accommodation, exceptional dining, and unrivalled event venues.



Location & Map

Just 20 minutes from Ngurah Rai International Airport, adjacent to sacred Pura Geger temple and Bali's finest beach.

- Direct access to VIP transfers
- Seamless connectivity for group arrivals

Built for World Leaders

From Heads of State discussions to corporate retreats and social gatherings, Mulia Bali offers an unparalleled meeting experience. Our beachfront resort boasts state-of-the-art facilities and versatile spaces, meticulously designed to accommodate any event. Explore our conference centre with versatile breakout rooms, two pillarless ballrooms, and stunning beachfront or private gardens, perfect for group buyouts and memorable events.



Bali's First Multi-Resort Integrated Destination

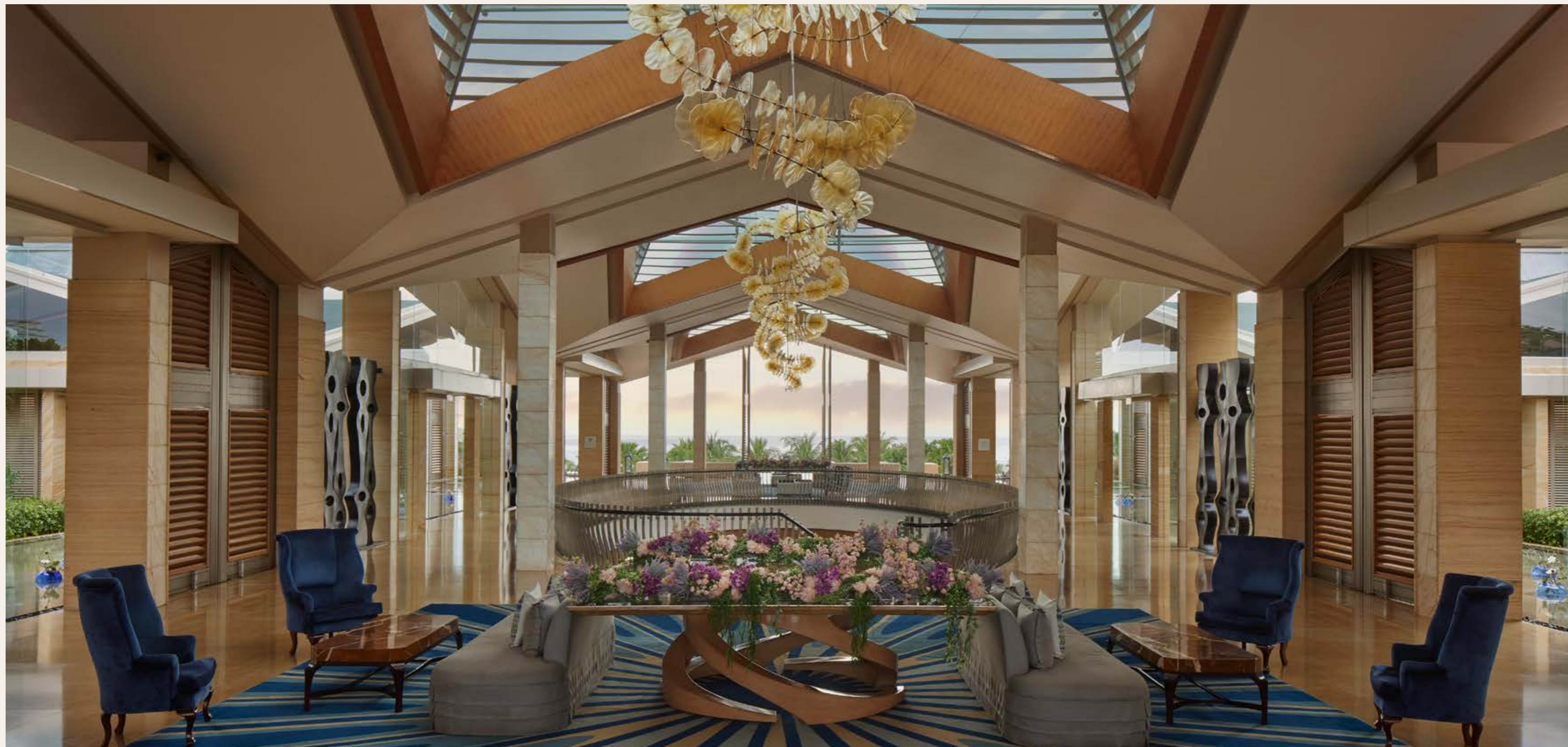
- Three resorts. One extraordinary address.
- **Mulia Resort:** Vibrant and expansive with versatile facilities, ideal for large conferences and incentive groups.
- **The Mulia:** All-suite beachfront exclusivity with sunrise views and dedicated butler service, perfect for VIPs and senior executives.
- **Mulia Villas:** Bali's largest private pool villas, offering secluded luxury and personalised butler service for C-level retreats.



Mulia Resort Overview



Mulia Resort Lobby



Mulia Resort – Grandeur, Grandeur Deluxe & Mulia Signature

Elegant comfort with garden, courtyard or lagoon pool views.



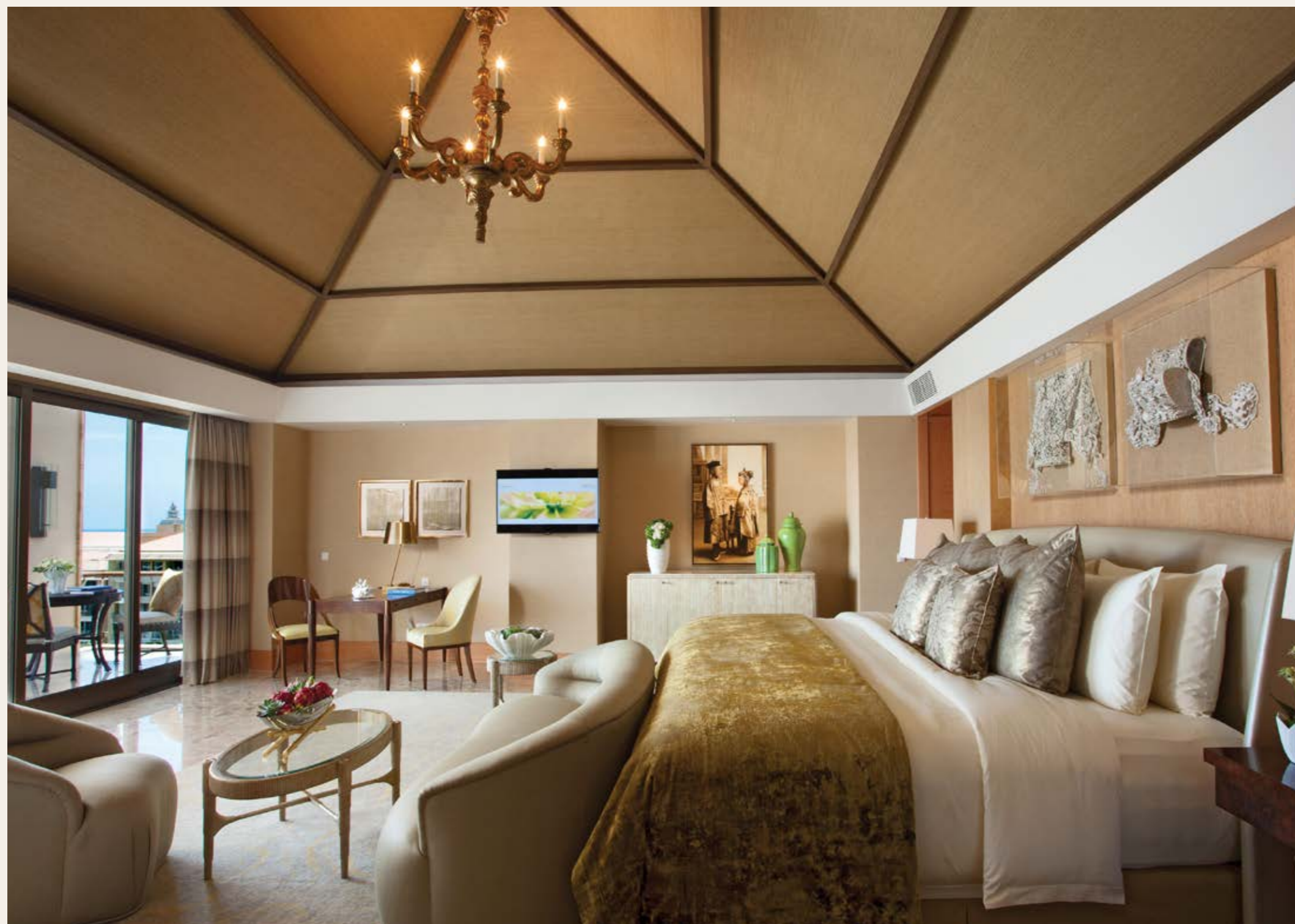
Mulia Resort – Royal Suite

Spacious suite with sofa bed and versatile family-friendly layout.



Mulia Resort – The Duke Suite

Ocean-view suite with private butler and exclusive privileges.



MICE Facilities & Venues

Grand Ballroom

An opulent ballroom for gala events, conferences, and grand celebrations.



MICE Facilities & Venues

Grand Ballroom Foyer

An opulent ballroom for gala events, conferences, and grand celebrations.



MICE Facilities & Venues

Violet Ballroom

A refined and versatile venue, ideal for large-scale conferences, elegant receptions, and corporate meetings.



MICE Facilities & Venues

Violet Ballroom Foyer

A refined and versatile venue, ideal for large-scale conferences, elegant receptions, and corporate meetings.



MICE Facilities & Venues

Conference Rooms

Thirteen versatile spaces for board meetings, banquets, and executive gatherings.



MICE Facilities & Venues

Mulia Glass House

Bali's newest beachfront venue with indoor elegance and ocean views.



MICE Facilities & Venues

Unity Garden

A 2,000 sqm beachfront venue with panoramic ocean and temple views.



MICE Facilities & Venues

Eden Garden

An enchanting garden setting for elegant outdoor receptions and banquets.



MICE Facilities & Venues

Eternity



MICE Facilities & Venues

Harmony



MICE Facilities & Venues

Sky Bar



MICE Facilities & Venues

ZJ's Bar



MICE Facilities & Venues

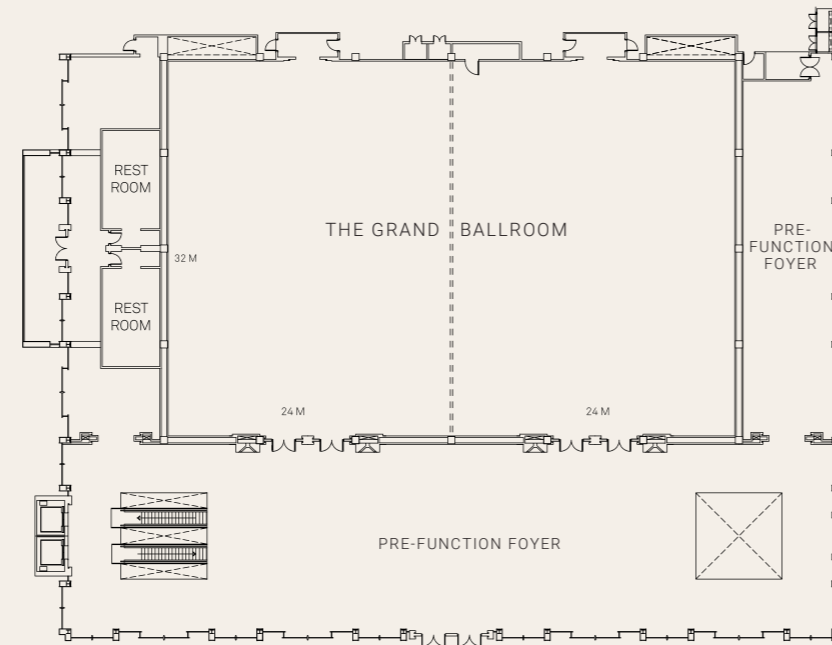
The Bar



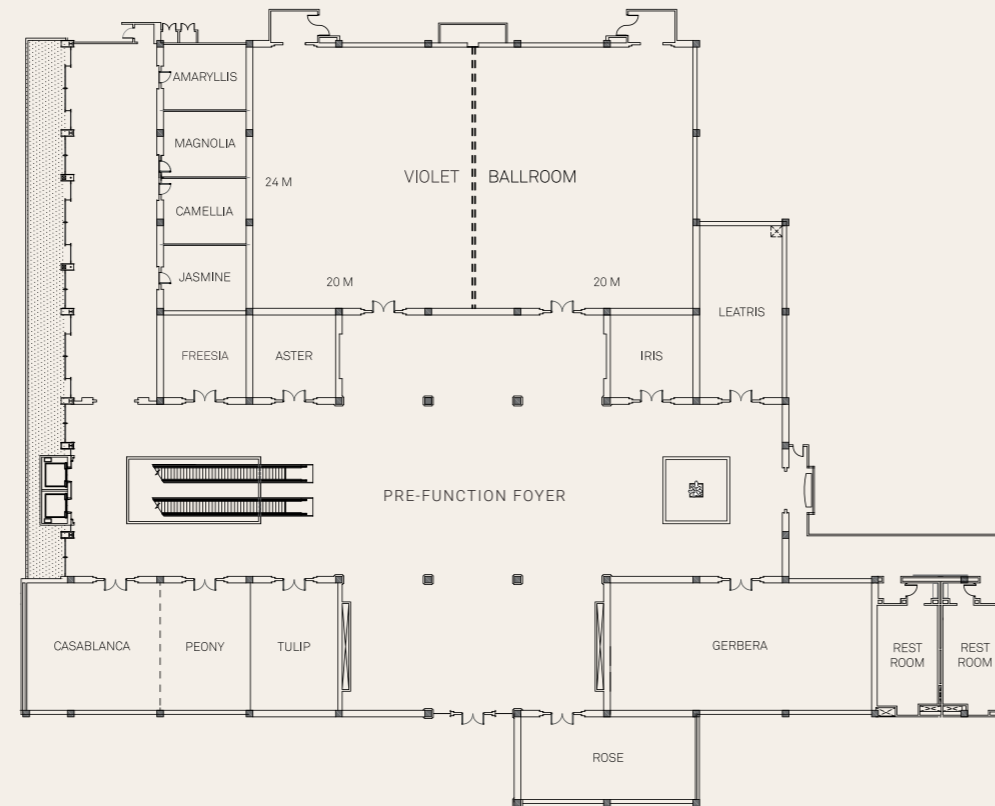
Meeting Rooms & Capacity Chart

Breakout spaces with natural light, AV tech, high-speed Wi-Fi

Lobby Level



Promenade Level



Function Rooms	Size (m)			Size (ft)			Capacity					
	W x D	SQM	H	W x D	SQF	H	Theatre	Classroom	U-Shape	Round Table	Cocktails	Boardroom
Lobby Level												
The Grand Ballroom	48 x 32	1,536	6.5	157.4 x 105	16,526	21	2,055	1,140	-	1,080	2,000	-
Ballroom 1	24 x 32	768	6.5	78.7 x 105	8,263	21	1,000	513	-	540	1,000	-
Ballroom 2	24 x 32	768	6.5	78.7 x 105	8,263	21	1,000	513	-	540	1,000	-
Pre-function Foyer	64 x 16	1,177	4.5	209.9 x 52.5	11,020	15	-	-	-	-	1,500	-
Promenade Level												
Violet Ballroom	40 x 24	940	5	131.2 x 78.8	10,338	16	1,200	720	-	600	1,400	-
Violet Ballroom 1	20 x 24	470	5	65.6 x 78.8	5,169	16	600	360	-	300	700	-
Violet Ballroom 2	20 x 24	470	5	65.6 x 78.8	5,169	16	600	360	-	300	700	-
Casablanca	11 x 11	121	4	36.1 x 36.1	1,303	13	180	96	30	90	135	-
Peony	8 x 11	88	4	26.2 x 36.1	946	13	96	42	27	60	90	-
Casablanca & Peony (Combined)	19 x 11	209	4	62.3 x 36.1	2,249	13	276	138	50	150	230	-
Tulip	8 x 11	88	4	26.2 x 36.1	946	13	96	42	27	60	90	-
Rose	15 x 7	105	4	49.2 x 23	1,132	13	120	54	39	80	120	-
Gerbera	23 x 11	253	4	75.4 x 36.1	2,722	13	350	168	66	180	270	-
Leatris	7 x 15	105	4	23 x 49.2	1,132	13	130	54	39	80	120	-
Iris	7 x 7	49	4	23 x 23	529	13	60	24	18	40	60	-
Aster	7 x 7	49	4	23 x 23	529	13	60	24	18	40	60	-
Freesia	7 x 7	49	4	23 x 23	529	13	60	24	18	40	60	-
Jasmine	7 x 6	42	4	23 x 19.7	453	13	48	24	15	30	45	18
Camellia	7 x 6	42	4	23 x 19.7	453	13	48	24	15	30	45	18
Magnolia	7 x 6	42	4	23 x 19.7	453	13	48	24	15	30	45	18
Amaryllis	7 x 6	42	4	23 x 19.7	453	13	48	24	15	30	45	18
Outdoor Venues												
Unity Garden	-	2,000	-	-	21,527	-	-	-	-	600	1,000	-
Eden Garden	-	448	-	-	4,822	-	-	-	-	250	400	-
Mulia Glass House	12 x 20	240	6	39 x 65	2,559	19	200	140	50	120	200	48

*Capacities are approximate and may vary depending on final setup, décor, and safety requirements.

Team Building



Past International Events

Chosen by world leaders, multinational corporations, and incentive planners across Asia-Pacific.

- G20 delegation hosting
- Fortune 500 Conferences and Incentives



Dining Destinations - The Cafe

Eclectic fusion of global culinary traditions, offering an ethnic-gastronomic journey that showcases authentic dishes from around the world.



Dining Destinations - Soleil

Sanctuary for epicureans, renowned for its sumptuous Sunday Brunch.



Dining Destinations - Table8

The best Chinese and Cantonese dim sum experience in Bali.



Dining Destinations - Edogin

A refined and elegant setting where the art of Japanese cuisine is celebrated with a contemporary touch.



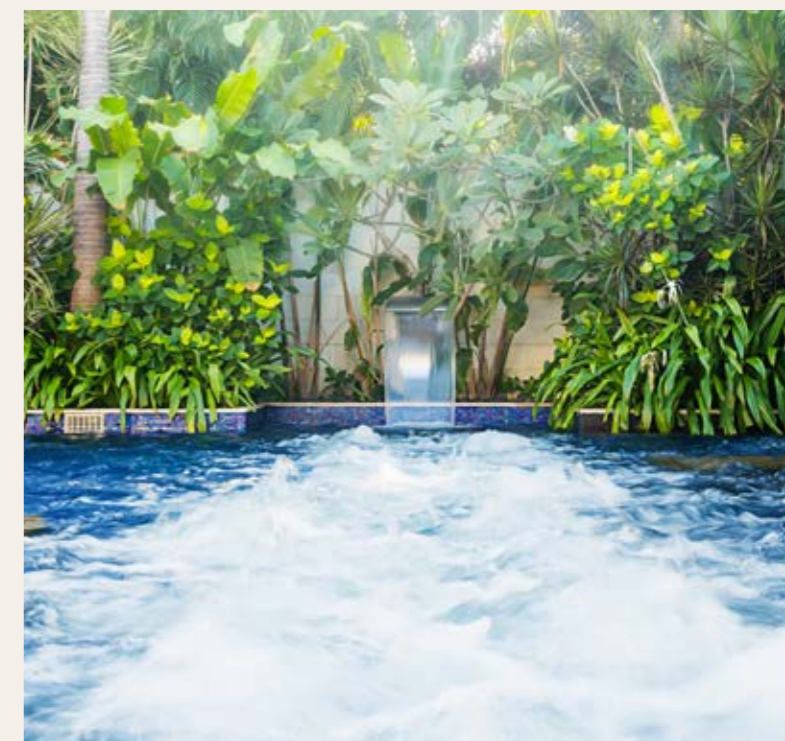
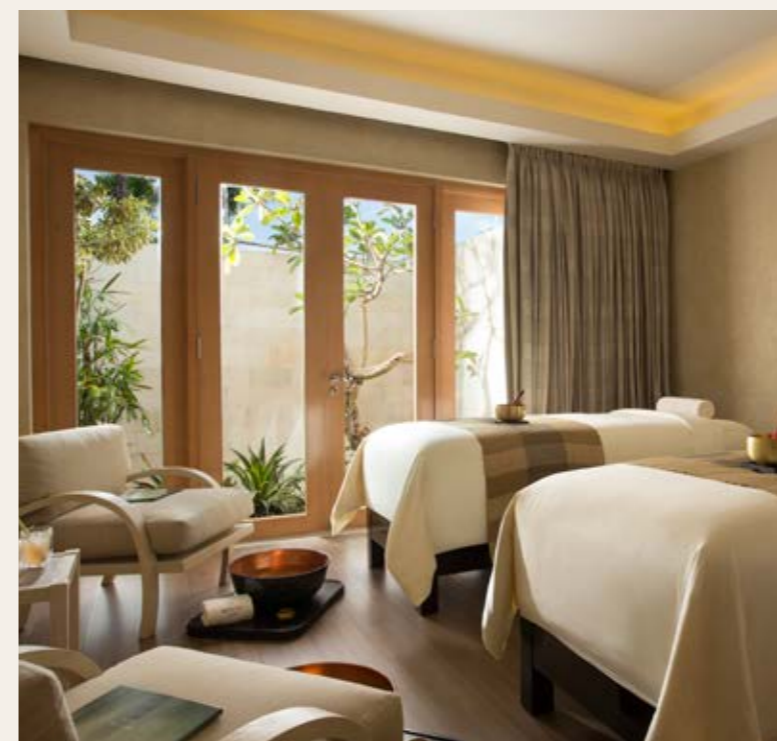
Dining Destinations

Showcase live kitchens, gala dining options, Sunday brunch, and incentive-friendly venues



Resort Lifestyle & Wellness

Spa therapies, beachfront wellness, and leisure



Facilities



Ocean Pool

OPENING HOURS: 7 AM - 7 PM

Only steps from the Indian Ocean and Geger Beach, the Ocean Pool is complete with stunning Balinese inspired statues and plentiful sun loungers just waiting for you.



Courtyard Pool

OPENING HOURS: 7 AM - 7 PM

Nestled at the heart of Mulia Resort and surrounded by lush tropical gardens with plenty of sun loungers, this is an ideal oasis to relax after a swim.



Ladies Courtyard Pool

OPENING HOURS: 7 AM - 7 PM

The Ladies Courtyard Pool is distinct with contemporary Balinese lady statues carrying flowers, symbolising the daily prayer and rituals of Bali. This pool is positioned in the centre of Mulia Resort.

Facilities



Oasis Pool

OPENING HOURS: 7 AM - 7 PM

Exclusively for guests staying at The Mulia and Mulia Villas, Oasis Pool is the perfect infinity pool only steps from the Indian Ocean. Private cabanas are also available*.



Splash Pool

OPENING HOURS: 7 AM - 7 PM

A dedicated children's pool for kids between the age of 3 to 12 years old, with water fountains and space to splash around. Splash Pool requires parental supervision.



Aqua Pool

OPENING HOURS: 7 AM - 7 PM

Perfectly located above Mulia Villas, with an infinity view of the Indian Ocean, the Aqua Pool is exclusively reserved for the guests staying at Mulia Villas and The Mulia. Daybeds and sun loungers are also available.

Facilities



Cabanas

OPENING HOURS: 7 AM - 7 PM

Sprawl yourself in one of the luxury, private and poolside cabanas* at Mulia Resort and The Mulia after experiencing and splashing out in our pools. One or two drinks with snacks from Pool Bar would be your great relaxation companions.



Mulia Spa

OPENING HOURS: 8 AM - 8 PM

Enjoy a range of treatments in our serene setting, featuring twenty luxurious treatment rooms, Finnish saunas, meditative steam rooms, ice rooms, and hydrotherapy pools.



Fitness Centre

OPENING HOURS: 6 AM - 8 PM

Mulia Fitness Centre features cutting-edge equipment and a variety of engaging activities to boost your fitness. Enjoy complimentary fitness courses or customize a program with our expert staff. Please consult at least 24 hours in advance.

Facilities



Tennis Court

OPENING HOURS: 7 AM - 8 PM

Experience world-class tennis at Mulia Bali. Our facility boasts meticulously maintained courts and provides a range of services for all skill levels.



Salto Gift Shop

OPENING HOURS: 9 AM - 6 PM

Discover SALTO Gift Shop, where curated fashion, exquisite jewelry, and unique finds come together for an exclusive shopping experience.



Business Centre

OPENING HOURS: 9 AM - 9 PM

Experience seamless efficiency with our Business Centre, offering expert secretarial services and exclusive private meeting rooms, available upon request.

Luxury for All Ages

- **Mulia Kidz (Ages 3–8)**

A variety of activities including fun dances, craft making, treasure hunts, and Balinese cultural lessons, ensuring a fun-filled and educational experience.

- **Mulia Kidz Explorer (Ages 6–12)**

Children can enjoy wall climbing, touch screen games, table games, soccer table, a book corner, interactive projector games, and engaging art and craft activities.

- **T-Zone (Ages 9–15)**

A dedicated space for teenagers next to the Splash Pool.



Request for proposal www.themulia.com/bali/meeting-rfp



call +62 361 301 7777 or email info@themulia.com

Jl. Raya Nusa Dua Selatan, Kawasan Sawangan, Nusa Dua 80362, Bali, Indonesia

www.themulia.com/bali/meetings



TheMuliaBali

Awards & Accolades

